



Fixed height gynaecological chair

524 range

526

CARINA
Medical



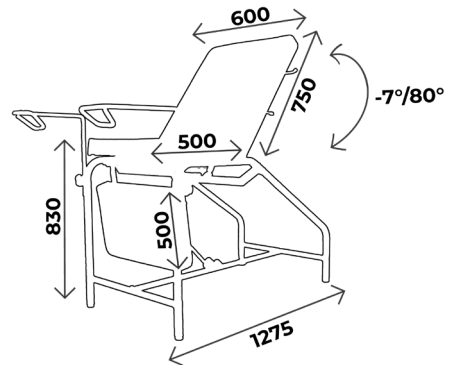
CE
ISO 9001
ISO 13485

TECHNICAL DETAILS

- 3 sections gynaecological chair, width 60cm
- Backrest adjustment with gas jack
- Legrest adjustment with self locking mechanism system, mechanically reclinable seat (2 positions : 0/+4cm)
- Adjustable legrest with 2 positions : horizontal to alignment of the seat and vertical underneath the seat
- Trendelenburg position
- Flat upholstery with visible seam and good density 30kg/cm², M1 fire retardant class, thickness 8cm
- Equipped with a stainless steel drawer and a pair of legrests
- With paper roll holder for exam sheet, on the head side
- Epoxy covering, light grey colour (RAL 7035) in standard

DIMENSIONS

- Width 60cm
- Height 83cm
- Load capacity : 150kg



You may also like :

Ref. **524** : Same as 526 with fixed seat

V01-10/21



WHAT YOU NEED TO KNOW

- ✓ Delivery time: 15 days upon receipt of order
- ✓ Warranty : 5 years (1 year for the upholstery)

ACCESSORIES



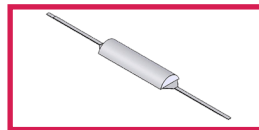
ACC 964
Pair of legrests on knee system
in black polyurethane,
diam. 14 mm, without clamp



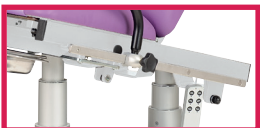
SLFEMIREPOSE
Cover for legrests (ACC964) in
upholstery, the unit



ACC TETERGO
Ergonomic head rest



ACC 54001
Half moon head rest width 60cm
fire retardant M1 class



ACC RAIL IN-L400
Pair of stainless steel rails dim.
25x10 length 40cm for seatrest
of range 625, 725 and 524



ACC 537
Pair of clamps diam. 14mm for
blood test splints and stirrups



ACC 75
Pair of clamps diam. 14mm



ACC 110
Blood test splint in colour
without clamp, the unit

UPHOLSTERY'S COLOURS

Fire retardant
upholstery, M1 class

For the upholstery colours, you can choose between the Classic and Urban range
Be careful ! Urban colours **with extra value**

Upholstery : Classic range



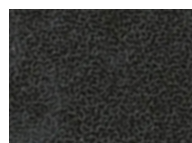
Arno



Garonne



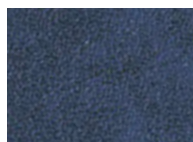
Potomac



Amour



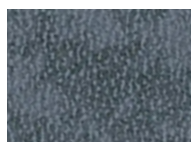
Mississippi



St Laurent



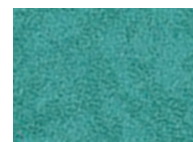
Rhône



Missouri



Seine

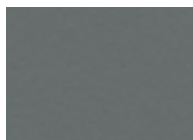


Amazone

Upholstery : Urban range



Abysse



Cendre



Origan



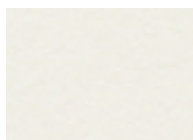
Géranium



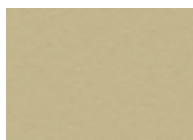
Réglisse



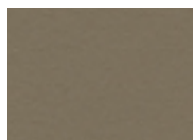
Prune



Perle



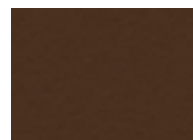
Ficelle



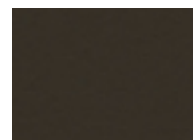
Terre



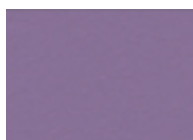
Béton



Chataigne



Chocolat



Pensée



Pétrole



Turquoise



Granny



Absinthe



Ananas





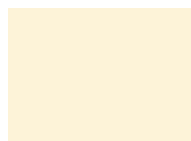
BASE COLOURS

The entire 524 range is offered in light grey (RAL 7035) as standard
Possibility to change the color without extra charge

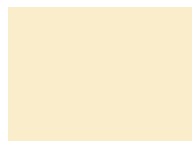
Base colour



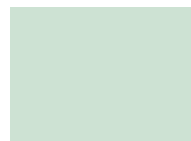
RAL 9003



RAL 1013



RAL 1015



RAL 6019



RAL 6033



RAL 6000



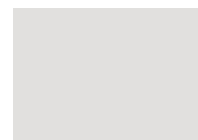
RAL 5017



RAL 5002



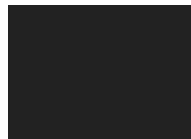
RAL 5000



RAL 7035



RAL 7016



RAL 9005



RAL 1018



RAL 3020



RAL 3003

Shiny

SILVER



MAINTENANCE GUIDE

DAILY MAINTENANCE

Upholstery : Cleaning with soapy water only (no solvents), can be disinfected with products such as Phagosept Spray, Salvanios pH10 at 0.75% and Anios Surfaces Hautes, without abrasive material

Base : cleaning with soapy water only (no solvents) without abrasive materials

WARRANTY

Mechanical/ electrical part : 5 years

Upholstery : 1 year



CONTACT

CARINA
Médical

Parc d'entreprises Visionis
278 rue de l'industrie
01090 GUÉREINS- FRANCE

COMMERCIAL DEPARTMENT

Tél: +33(0)4 74 66 69 49
Fax: +33(0)4 74 66 69 50
export@carinamedical.com